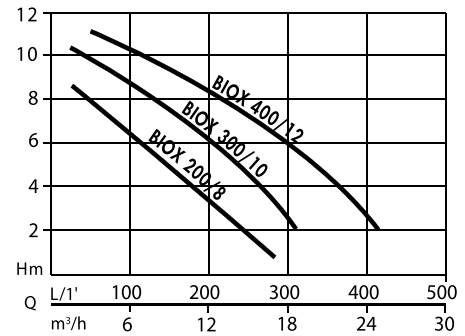
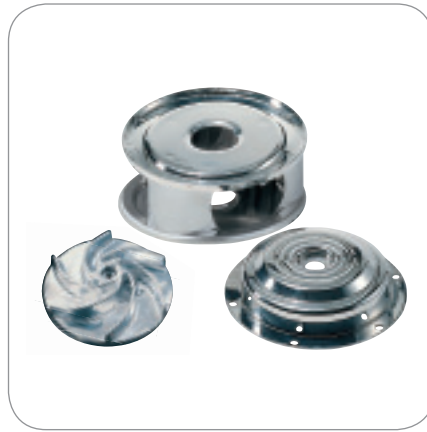


Biox Range



BIOX: Powerful and resistant

- Self-cleaning Vortex impeller design
- Oil chamber for seal lubrication. Mechanical seal with oil bath for a continuous lubrication.
- V-RING gasket to protect the seal

from sand. Particularly suitable for waste water with solid particles, cesspools, excavation water and yards

- Protection/insulation class : IPX8/F

- STAINLESS steel pump body
- STAINLESS steel supporting base to guarantee a greater stability
- STAINLESS steel shaft

- Stainless steel pump body
- Self-cleaning Vortex impeller design
- Max. size of impurities 40 mm

bioX 200/8 auto



bioX 300/10 auto



bioX 400/12 auto



Article	N2091020	N2091040	N2091060
Barcode	8010583101706	8010583101720	8010583101744
Absorbed power	900 W	1300 W	1600 W
Max Head / pressure	9 m / 0,9 bar	11 m / 1,1 bar	12 m / 1,2 bar
Flow rate	17000 l/h	2100 l/h	27000 l/h
Pump Body	Stainless steel	Stainless steel	Stainless steel
Voltage	230V - 50Hz	230V - 50Hz	230V - 50Hz
Rated current	4.1A	5.8A	7.2A
Max depth of immersion	7m	7m	7m
Max. temperature of fluid	40°C	40°C	40°C
Start / stop level	370mm/250mm	400mm/300mm	400mm/300mm
Impeller	Die-cast STAINLESS steelsteel	Die-cast STAINLESS steelsteel	Die-cast STAINLESS steelsteel
Minimum draining level	45 mm (manuel)	45 mm (manuel)	45 mm (manuel)
Max. size of impurities	40 mm	40 mm	40 mm
Ø Pump outlet	47,8 mm (1"1/2 M)	59,61 mm (2" M)	59,61 mm (2" M)
Accessories	Reducer nipple 1 1/2" - 1 1/4" Adjustable connector for hoses Ø 32 and 39 mm	Reducer nipple 1 1/2" - 1 1/4" Adjustable connector for hoses Ø 32 and 39 mm	Reducer nipple 1 1/2" - 1 1/4" Adjustable connector for hoses Ø 32 and 39 mm